

# G-COMM MAIL

COMPLETE MOBILE E-MAIL AND WEATHER INFORMATION SERVICE

GCOMM MAIL is a mobile e-mail service that provides access to e-mail and weather information, wherever and whenever it's required. GCOMM MAIL can be used with a wide variety of Satellite and GSM telephones, as well as land based public telephone networks, including cable based Internet service providers. The application was originally developed for mariners, requiring access to e-mail and weather services via satellite and GSM telephone systems. It is designed to offer the simplest possible interface, whilst ensuring that relatively expensive airtime charges, are effectively minimised using data compression techniques. GCOMM MAIL also allows access to e-mail accounts via more conventional land based "dial-up" or broadband connections. Which means that you can continue using the service, wherever you are.

## SPECIAL OPTIONS

GCOMM MAIL subscribers can now create their own "web diaries" and update them via e-mail. Popularly known as "Weblogs" or "BLOGS", these diaries are a great way of allowing others, access to information about you. your voyage, journey, or latest adventure!



## GETTING STARTED

To make life easy, GCOMM MAIL uses e-mail applications that most of you will have some experience of. \*Microsoft Outlook and \*Microsoft Outlook Express are fully compatible with GCOMM MAIL. Microsoft Outlook Express is supplied with all \*Microsoft Windows compatible personal computers, so you will not have to purchase any extra software to get started with GCOMM MAIL.

Before installing GCOMM MAIL, you will need to decide how you are going to connect your communication device to your computer. Some laptops still have 9 pin Serial connectors built in ( RS232 ). Most modern laptop computers however, only provide access to USB connectors. If you have a satellite telephone, Iridium 9505a for example, you will need to connect it to your computer using one of these methods. If USB is the only option available to you, then you must purchase a suitable USB to serial converter. These devices are provided with their own software, which must be installed, prior to any installation of GCOMM MAIL. GCOMM can provide you with a suitable USB to serial converter. <http://www.g-comm.co.uk>

Should you decide to use a GSM mobile handset with GCOMM MAIL, then you may be able to make use of Blue-Tooth or Infra-red wireless connection. This of course will depend upon the capability of your personal computer and the mobile handset.

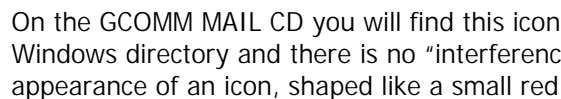
### **Note: You cannot install GCOMM MAIL directly onto a PDA device or 'Smart' phone**

Whichever way you decide to connect your communications equipment to your computer, it is a good idea to learn a little about COM ports. These are the ports that your operating system will allocate to devices like USB to serial converters. You can easily discover which COM port your operating system has allocated to the USB adapter / Standard serial port / Blue-Tooth "dongle" or infra-red device, by accessing your "device manager" from within "control panel"

1. Open Control Panel
2. Double Click on the "System" icon
3. Click on the "Hardware" tab
4. Click on "Device Manager"
5. Locate "ports" section on the left hand side of the device manager window
6. Left click on the + symbol next to ports.
7. You will now see a list of devices and their allocated port numbers.
8. Make a note of any relevant ports.

The procedure above is particularly useful when using USB to serial converters, as occasionally you may plug your USB adaptor into a different USB socket on your computer. When this happens your operating system may choose another port number to allocate to the device. It is important that you know which port number is being used, so that you can correctly configure any software you choose to use with your device/s.

## INSTALLATION

On the GCOMM MAIL CD you will find this icon  double click on it. That's all there is to it really. No data is placed in the Windows directory and there is no "interference" with the registry. GCOMM MAIL should then automatically start, indicated by the appearance of an icon, shaped like a small red sailing boat on the right hand side of your task bar.

Now, double click on the small red sailing boat and choose "Tools" > Configure email > Outlook Express to configure your email settings. Please follow the on-screen prompts.

When you have finished configuring your email settings, connect your **Iridium** telephone to your computer using the appropriate com port and switch on your **Iridium** telephone. Then right click on the small red sailing boat and choose "Configure Sat Phone"

Click,"auto scan & install". Your satellite telephone should be automatically detected, the driver will be installed and a "Windows dial-up-connection created. You will find your newly created dial-up-connection in either 'settings > network connections, or control panel > network connections if you prefer to navigate your computer in this way. You may also connect by clicking on "start" then "Connect to" then "Iridium"

Double click on your new dial-up-connection and test.

## CONNECTIONS

Whichever way you decide to use GCOMM MAIL, with a satellite telephone, GSM mobile phone or when connected to Broadband services, the principal of operation is always the same. First of all establish connection, once the process is complete and you have access to the internet, you can send or receive your e-mail using your email client software ( Outlook Express for example).

**Remember, when using satellite telephones it is good practice to create your emails "off-line" so that you do not incur unnecessary expense, being connected to the Internet whilst composing your email.**

Once you have finished creating your emails, simply establish your Internet connection and then open your email application, Microsoft Outlook Express for example.

If you intend to use "Blue-tooth devices as modems to connect you to the internet and then access your GCOMM MAIL, then **please be aware of the following.**

There are hundreds of Blue-tooth devices, too many for us to cover in this document. For installation of Blue-tooth applications please refer to the manufacturers documentation.

### **Tips on Blue-tooth and GPRS**

Generally Blue-tooth devices must be "paired" with your computer in order to be recognised. This pairing process "asks" for a code to be input ( see manufacturers documentation ), both on the computer application and on the mobile handset. Once paired, services between the handset and the computer can be configured, using the Blue-tooth device application software, provided on the computer by the manufacturer. The services you set-up between your mobile handset and your computer, must include a DUN client ( Dial-up Networking ).

You may wish to connect via GPRS using your GSM mobile handset, via blue-tooth, if so the you will need to enter an APN ( access point name) value in the advanced modem settings on your computer. To do this, open control panel, then double click on phone and modem settings, then select the modems tab, then double click on the blue-tooth modem entry relating to your device. Then click on the advanced tab. Here you can enter the appropriate APN in the following format.

**at+cgdcont=1,"IP","accesspoint";** The word access point shown here will be where you type the access point of your GSM network. For example Vodafone, the access point name is "internet". The table below provides the access point names and username + passwords for common UK GSM networks.

Mobile Operator	Username	Password	Access Point Name
Vodafone Contract	web	web	internet
Vodafone PAYG	web	web	internet
Orange	(leave blank)	(leave blank)	orangeinternet
O2	faster	password	mobile.o2.co.uk
T-mobile	user	wap	general.t-mobile.uk
Virgin Mobile	user	(leave blank)	goto.virginmobile.uk
Tesco-Mobile	tescowap	password	prepay.tesco-mobile.com

# TROUBLE SHOOTING

Please remember to use the automatic sat-phone configuration utility available from within GCOMM MAIL. Simply right click on the small red boat icon, available on your task bar, following software installation to choose "configure sat-phone".

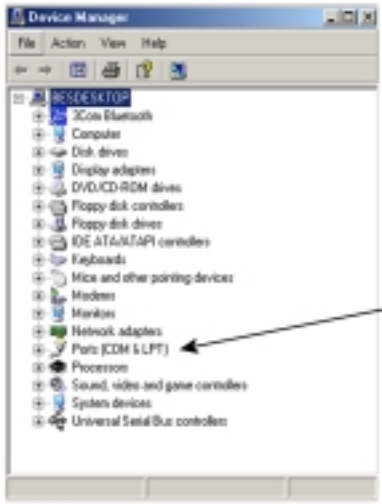
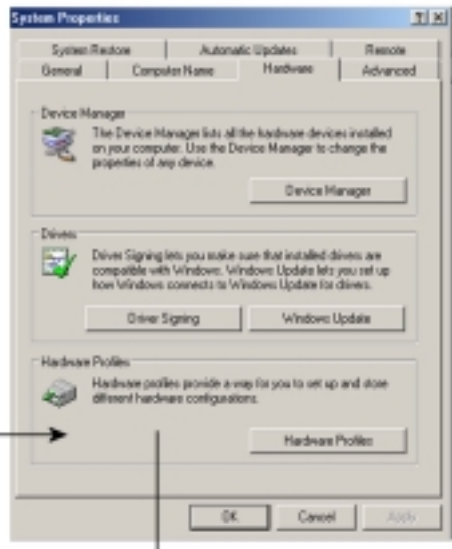
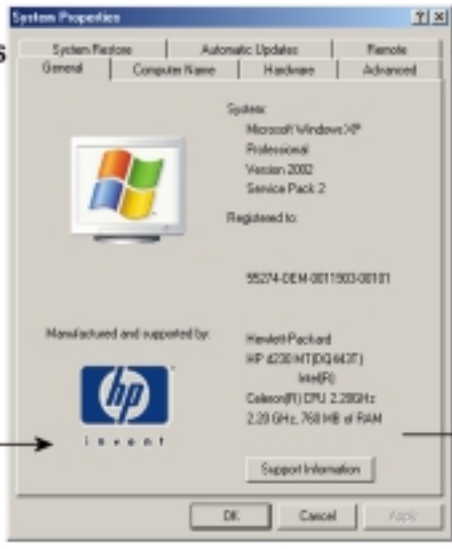
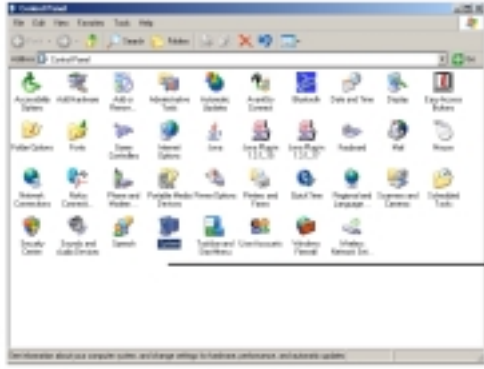
One of the most common problems is configuring software with the wrong COM Port number. REMEMBER your operating system will allocate a COM port number to any hardware device that you use for communications. It is important to be sure that any configuration of communications software on board your computer has it's COM port settings matched to those of your hardware. You may plug your USB adaptor into a different USB socket on your computer. When this happens your operating system may choose another port number to allocate to the device. It is important that you know which port number is being used, so that you can correctly configure any software you choose to use with your device/s.

**Example.** you install a USB to serial converter, which is allocated COM Port 4 by your operating system. Previously you had a cable modem driver for your Nokia GSM handset installed on your computer, allocated to COM port 3. You have always used this handset to dial in to your ISP, whilst on board your yacht. However you have decided to use your old 9 pin serial port for a recently acquired GPS system. To use the Nokia handset with your newly installed USB to serial converter you must match the Nokia Modem driver properties to COM Port 4. However the software drivers supplied with GSM handsets rarely allow the COM port to be changed by the user. When this is the case, it is best to connect your GSM handset to your computer ( in this case to your new USB to serial converter ) and let Microsoft Windows software detect the device and install the driver to operate with the COM port it is physically connected to. In this way the COM ports are matched, to COM port 4.

Another familiar problem is when the dial-up settings such as username, password and APN, are either omitted or are incorrectly entered. Many are case sensitive so be careful when configuring and typing in your settings. ( see table on previous page ).

# CONTROL PANEL

Control Panel is the place to go, whenever you need to inspect, or change the properties of communications hardware connected to your computer



The arrows show the "route" from control panel to the ports section within device manager.

By clicking on the small + sign here we can "inspect" the properties of all relevant COM ports being used on this computer.